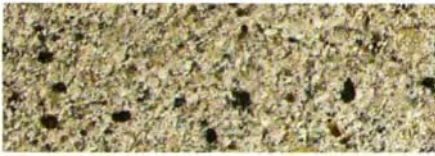


INTERIOR FINISHES

DS425

Acrylic-Based Finish Coatings



TerraNeo®



Tuscan Glaze™



Ameristone



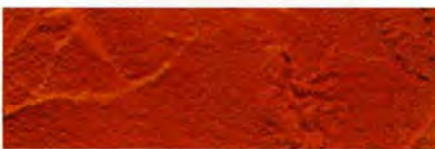
Stone Mist®



Sandpebble



Sandpebble Fine



Demandit

TerraNeo®

TerraNeo offers a natural aggregate finish with natural mica that replicates the look of rich granite.

Tuscan Glaze™

Tuscan Glaze is a tintable acrylic stain that can be applied to acrylic or elastomeric Dryvit finishes to create an "Old World" or "antique" appearance.

Ameristone™

Ameristone is rock solid and beautiful. It provides the architect and designer with a new level of durability and performance in an elegant architectural stone finish.

Stone Mist®

Stone Mist is a natural finish that accents the environment in subtle tones and enhances any interior or exterior wall.

Sandpebble®

Sandpebble is a 100% acrylic finish that produces a rough pebble texture.

Sandpebble® Fine

Sandpebble Fine is a 100% acrylic finish that creates a fine pebble texture.

Demandit®

The right choice for changing color of an existing Dryvit finish. Demandit can be used on a wide range of interior and exterior surfaces.

For over 25 years, Dryvit Systems, Inc. has been known for its Exterior Insulation and Finish Systems. Now the aesthetic benefits of the textured finish component of these systems have been adapted and made available for interior surfaces.

Shades have become fashionable interior tints. Textures have been refined in keeping with current decorator trends. But the quality control and superior acrylic-based formula are true to Dryvit standards of excellence.

Also, true to Dryvit standards, we offer this new line of architectural interior finishes through a network of distributors and contractors who will ensure that the finished product reflects the look you specify.

In downtown office or suburban plant, in public building or private residence, look to Dryvit finishes to give your interior space a personality all its own. Colors and textures lend themselves to graphic treatments, displaying company logos or decorative aesthetics.

Dryvit Systems, Inc.
P.O. Box 1014
One Energy Way
West Warwick, RI 02893
(800) 556-7752
www.dryvit.com

Information contained in this product sheet conforms to the standard detail recommendations and specifications for the installation of Dryvit Systems, Inc. products as of the date of publication of this document and is presented in good faith. Dryvit Systems, Inc. assumes no liability, expressed or implied, as to the architecture, engineering or workmanship of any project. To ensure that you are using the latest, most complete information, contact Dryvit Systems, Inc.



An RPM Company