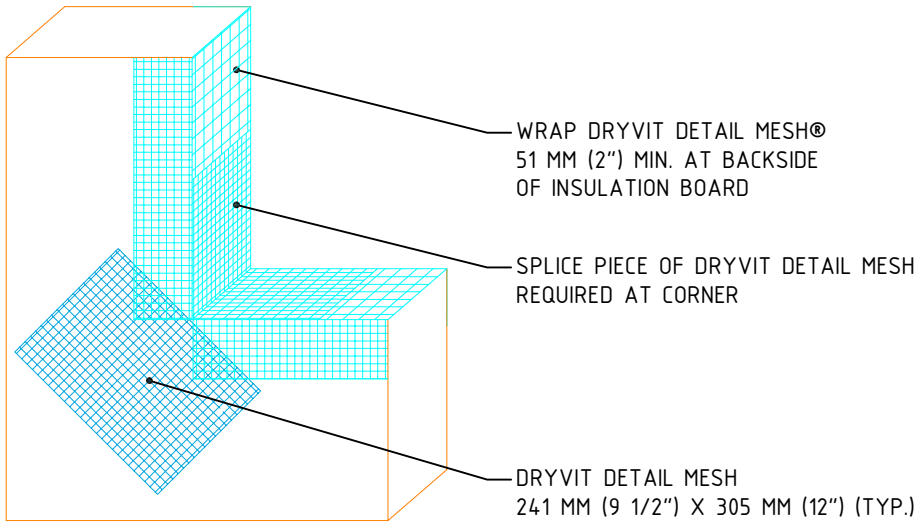


OFFSET INSULATION BOARD JOINTS FROM CORNERS OF OPENINGS

APPROVED OSMD SYSTEM INSULATION BOARD



WRAP DRYVIT DETAIL MESH® 51 MM (2") MIN. AT BACKSIDE OF INSULATION BOARD

SPLICE PIECE OF DRYVIT DETAIL MESH REQUIRED AT CORNER

DRYVIT DETAIL MESH 241 MM (9 1/2") X 305 MM (12") (TYP.)

# Outsulation® SMD System™

## System Configuration At Openings

- NOTE:**
1. LOCATE INSULATION BOARDS SUCH THAT BOARD EDGES DO NOT ALIGN WITH CORNERS OF PENETRATION.
  2. APPLY A PIECE OF 241 MM (9 1/2") X 305 MM (12") DRYVIT REINFORCING MESH DIAGONALLY AT EACH CORNER.

The architecture, engineering and design of the project using the Dryvit products is the responsibility of the project's design professional. All systems must comply with local building codes and standards. This detail is for general information and guidance only and Dryvit specifically disclaims any liability for the use of this detail and for the architecture, design, engineering or workmanship of any project. The project design professional determines, in its sole discretion, whether this detail or a functionally equivalent alternative is best suited for the project. Use of a functionally equivalent detail does not violate Dryvit's warranty. This detail is subject to change without notice. Contact Dryvit to insure you have the most recent version.

APPROVED BY:	REV:	DATE:
RS	4	02/09

