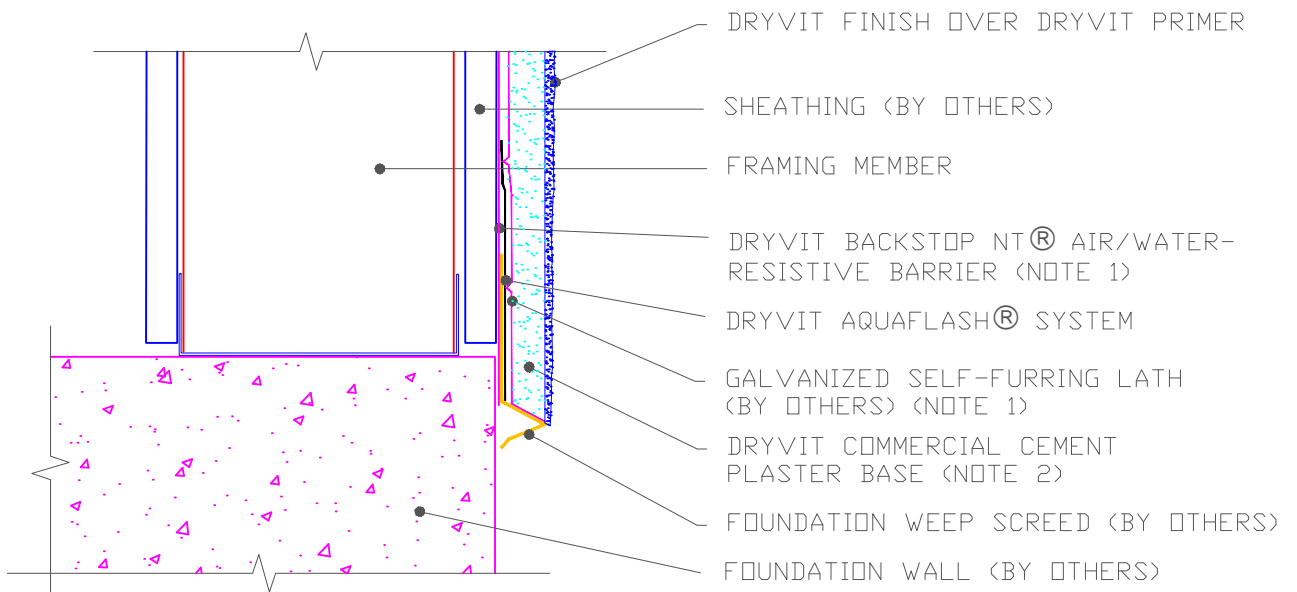


CASING BEAD AT CONCRETE FOUNDATION



WEEP SCREED AT CONCRETE FOUNDATION

Commercial Cement Plaster 3™

Termination at Concrete Foundation

NOTE:

1. BACKSTOP NT AIR/WATER-RESISTIVE BARRIER REQUIRES USE OF A SLIP SHEET LAYER SUCH AS #15 FELT OR PAPER BACKED LATH.
2. OTHER APPROVED SCRATCH AND BROWN COATS MAY BE ACCEPTABLE. CONSULT DRYVIT SYSTEMS, INC. FOR SPECIFICS.

The architecture, engineering, and design of the project using the Dryvit products is the responsibility of the project's design professional. All systems must comply with local building codes and standards. This detail is for general information and guidance only and Dryvit specifically disclaims any liability for the use of this detail and for the architecture, design, engineering or workmanship of any project. The project design professional determines, in its sole discretion, whether this detail or a functionally equivalent detail is best suited for the project. Use of a functionally equivalent detail does not violate Dryvit's warranty. This detail is subject to change without notice. Contact Dryvit to ensure you have the most recent version.

